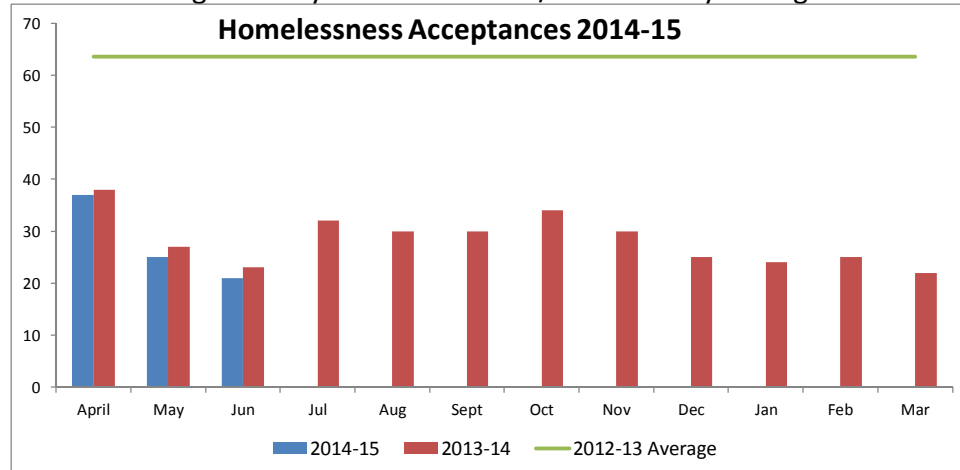
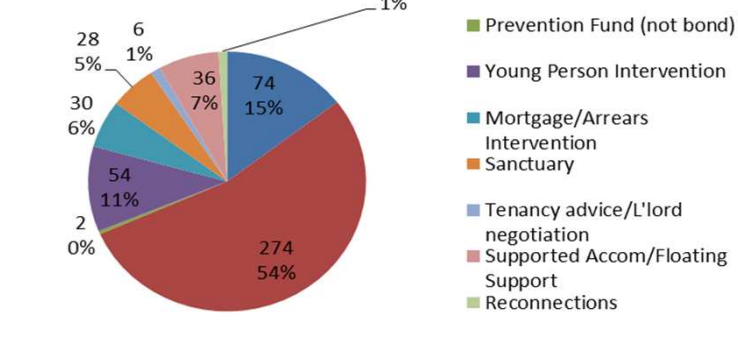


Housing Support - Performance Framework June 2014

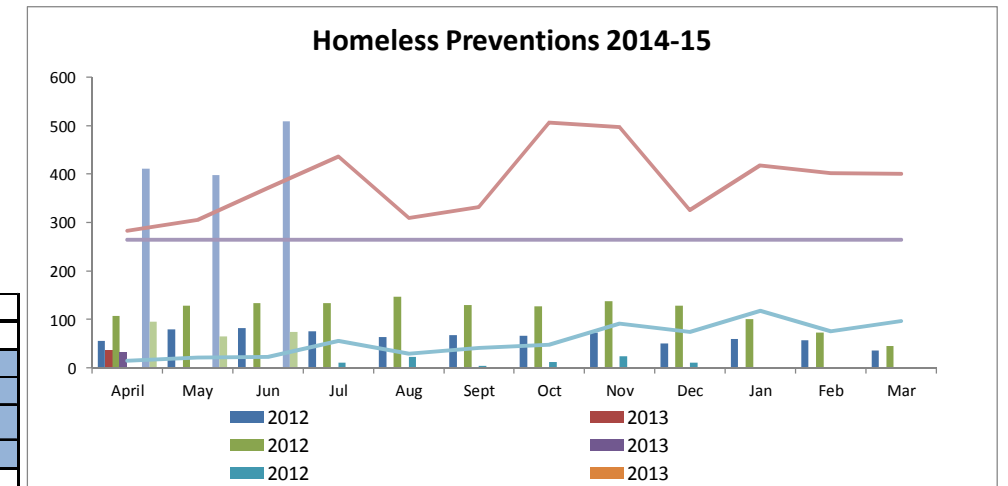
Half the core cities are reporting increases of up to 21% in households owed a main homeless duty (P1E, 2013 Qtr4 – 2014 Qtr1). At 21, Leeds' total for homeless acceptances in June is lower than previous months and remains significantly lower than 2012/13's monthly average of 64



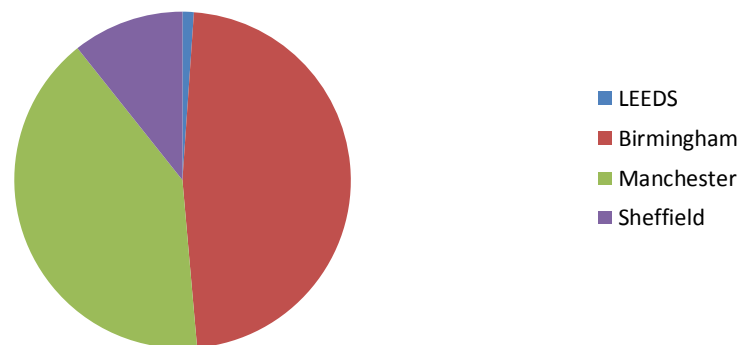
Prevention Breakdown June 2014



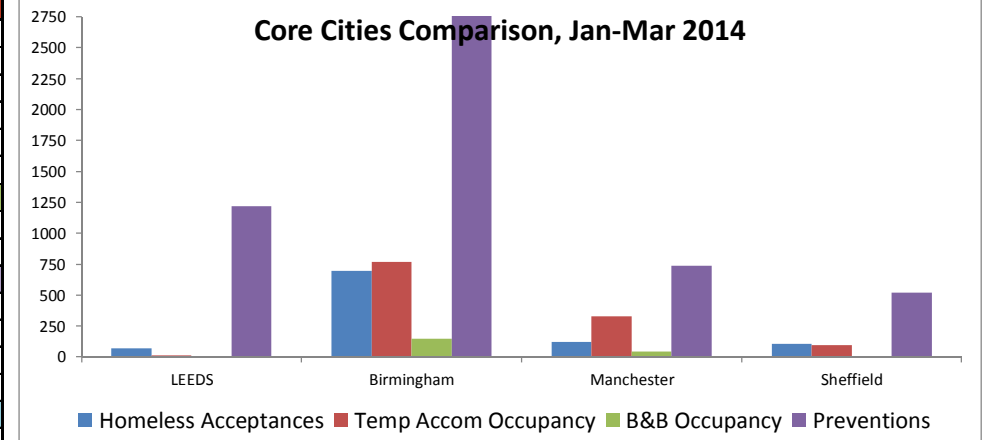
At 509, June's preventions exceed both the 2013/14 monthly average of 382 and 2012/13's monthly average of 266. In particular, preventions through Private Lets have increased from a monthly average of 57 in 13/14 to 74 in June 2014/15, and, following the service being transferred in-house, preventions through Young Person's Intervention have increased from an average of 19 in 13/14 to 54.



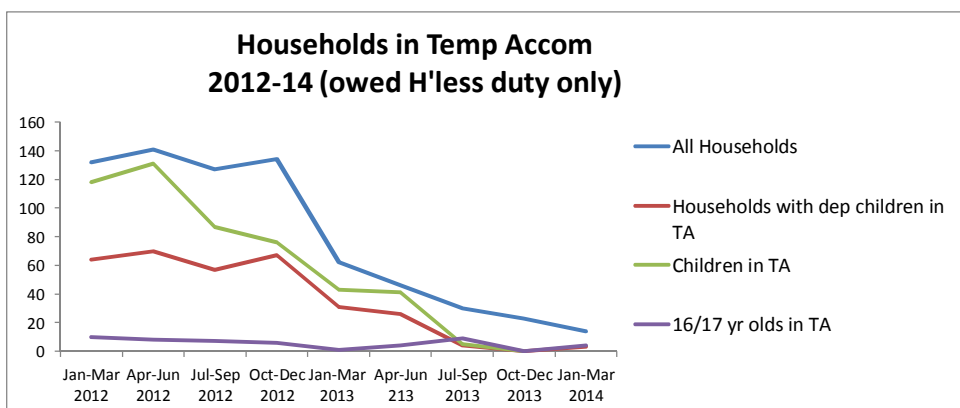
TA per 1,000 households (Jan-Mar 2014)



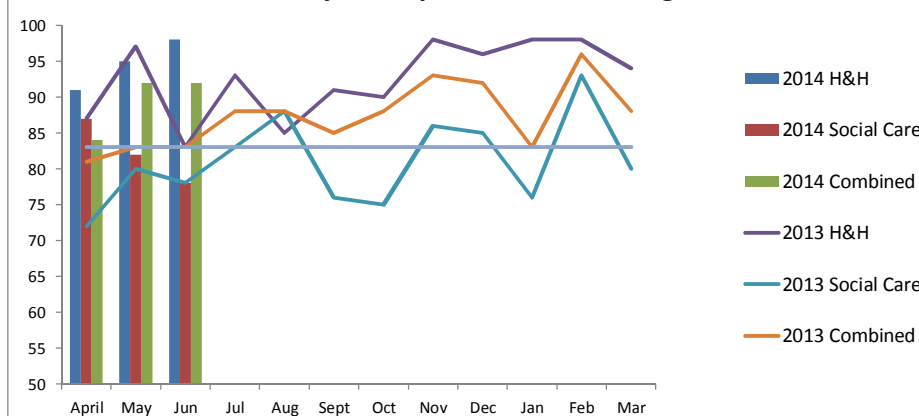
	2013-14				2014-15		
	Dec	Jan	Feb	Mar	Apr	May	June
Total Temp Accom Occupancy	155	154	145	157	149	150	131
Total Households with dependents	76	82	76	76	71	71	65
Total Number Children	112	108	100	97	106	110	106
Total 16/17 Year olds:	10	5	5	5	4	11	10
Of which:							
Self-Contained (Total)	80	84	81	91	86	81	72
of which Families in PSL	1	0	0	0	0	0	0
of which Families in HA	56	63	58	57	52	52	45
of which other H/Holds in PSL	1	1	1	1	1	1	1
of which other H/Holds in HA	22	20	22	33	33	28	26
Number children in PSL	0	0	0	0	0	0	0
Number children in HA	86	86	79	74	75	78	77
B&B (Total)	0	0	0	0	0	0	0
of which Families	0	0	0	0	0	0	0
of which other H/Holds	0	0	0	0	0	0	0
Hostel (Total)	52	44	42	43	42	48	37
of which male	40	36	35	36	34	38	25
of which female	5	5	2	4	3	4	5
of which young people	7	3	5	3	5	6	7
of which Families	0	0	0	0	0	0	0
Refuge (Total)	23	26	22	23	21	21	22
of which Families	19	19	18	19	19	19	20
of which Single female	4	7	4	4	2	2	2
Number of children	26	22	21	23	31	32	29



Vacant units in self-contained properties are being used to accommodate looked after children aged 16 - 21 years old as part of joint working with Children's Services and Housing Options. Close working with Flagship is ensuring young people do not need to go into hostels and wherever possible more suitable accommodation is secured.



% Major Adaptations within Target



Health and Housing performance has improved significantly, moving from the 50th percentile in 2010/11 to the 90th currently, despite more demanding targets that include shorter timescales to complete works. The % cases not completed are often extensions with in-built delays

During June, there were a total of 3 new encampments (lower than the 2013-14 monthly average which was 5), 1 of which was in the South of Leeds, 1 in East and 1 in the West.

